

# eBeam Training Handout

<b>Presenter:</b>	
<b>Date:</b>	
<b>Venue:</b>	

The eBeam will turn any whiteboard or flat surface into an interactive whiteboard. It sits on any flat surface, a window or a wall. It creates an interactive workspace.

It can be connected via USB or Blue Tooth. Note with the Blue Tooth connection you can get interference.

It works in two modes, eBeam interact and eBeam capture. There is also the handwriting recognition mode which is called Write Pen.

E-Beam has two distinctly different functions.

1. eBeam Interact which allows you to interact with a PowerPoint Presentation using the Interactive Stylus and a Whiteboard or Flipchart.
2. eBeam Capture which allows you to capture information written on either a flip chart or a whiteboard and turn this into a PowerPoint Presentation or handouts for your students. The interactive sleeve and dry marker pens are used here.



It is important to note that you can only use one function at a time; the two do not work together. There is a website with information about the E-beam:

[www.e-beam.com](http://www.e-beam.com)

This is also where you can download the software. Please ensure you have the updated software on your PC.

## **The eBeam kit.**

### ***1. eBeam pod***

It is important to note that this can be fitted with either a magnetic holder; suction cap holder; or flat holder suitable for Velcro Dots or self adhesive stickers. These are click on sections. Your trainer will demonstrate. The pod must be connected to the laptop using the silver USB cord or via the Blue Tooth connection.

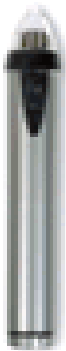


### ***2. The Silver USB Cord***



This is a regular USB connection, 5 metres in length. If you are using the eBeam in Blue Tooth Mode the Cord must be connected to the Power Point Connector. If you are using it via the laptop the cord will be plugged into the laptop.

### 3. Interactive Stylus



This is the Silver pen that does not have the ink in it. You will note there are two buttons on the side.

The interactive stylus

- Left click is the nib
- Right click is wireless and you hold, point and click
- The small button hides/reveals the tool palette on the screen.

The interactive stylus is battery operated and emits an ultrasonic buzz when the nib is depressed.

### 4. Interactive Sleeves for whiteboard markers

These are the black pens with the coloured collar

- Red
- Blue
- Black
- Green



Note that each pen is battery operated, if you listen to the pen tip when it is held down you will hear an ultrasonic buzz.

NB: The whiteboard marker inserts need to be removed from the sleeve after each use or they will dry out. These are not special markers, but they are of a slim style to fit into the interactive sleeve.

### 5. Innovative Toolbox Palette

This is what you will see on the Screen when you have eBeam software activated. There are several different palettes depending on what part of the eBeam is being used.



## ***Setting up Blue Tooth.***

It will be different for each computer and there are various blue tooth options. There is an online tool which tells you which manufacturer and which version.

- 1 Plug the pod into the power point, and connect the USB cable.
- 2 You can tell it is blue tooth ready because the light turns blue.
- 3 Blue tooth devices, right click add blue tooth – depends on pc – it might be in my computer. Blue Tooth places
- 4 Go through the wizard, yes, it will do a search,
- 5 eBeam pod is always discoverable. It also has the serial number.
- 6 You select the device, click next,
- 7 Put in the pass key; it is written on the pod, by default 1234
- 8 Select the option to let me choose my own pass key, enter the pass key
- 9 It will then go through the process of entering the passkey and it will install new hardware which opens a comm port between the blue tooth pod and the blue tooth on the computer.
- 10 This step needs to be done once on the computer and it will be remembered.
- 11 It will assign communication ports to the pod. Take a note of the ports for future reference. If it does not auto detect, you may have to choose the port. Incoming and outgoing comm port.
- 12 Then finish
- 13 In the system tray you right click on eBeam Interact, right click and hit detect system.
- 14 You now have the same functionality as the USB mode.

Go to [www.luidia.com](http://www.luidia.com) for the online system, under the support section.

The palette auto detects depending on what program you have selected. eBeam scrapbook and PowerPoint have their own palettes.

## Steps to Setting Up

1. Turn on laptop
2. Plug in eBeam – using the silver USB cord or the Blue Tooth.
3. Connect LitePro
4. Physically place eBeam on whiteboard or butcher's paper – can be top right or bottom left.

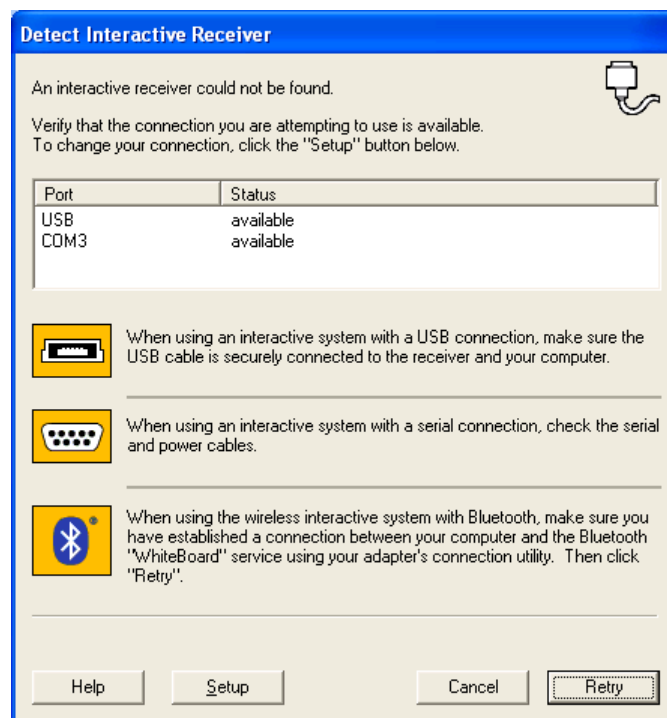
The projecting area cannot overlap the pod. The pod can go in any corner. It is worth noting halogen down lights can cause disruptions to the pod.

**Note** – if you are right handed, put the eBeam on the left hand side;  
if you are left handed, put the eBeam on the right hand side

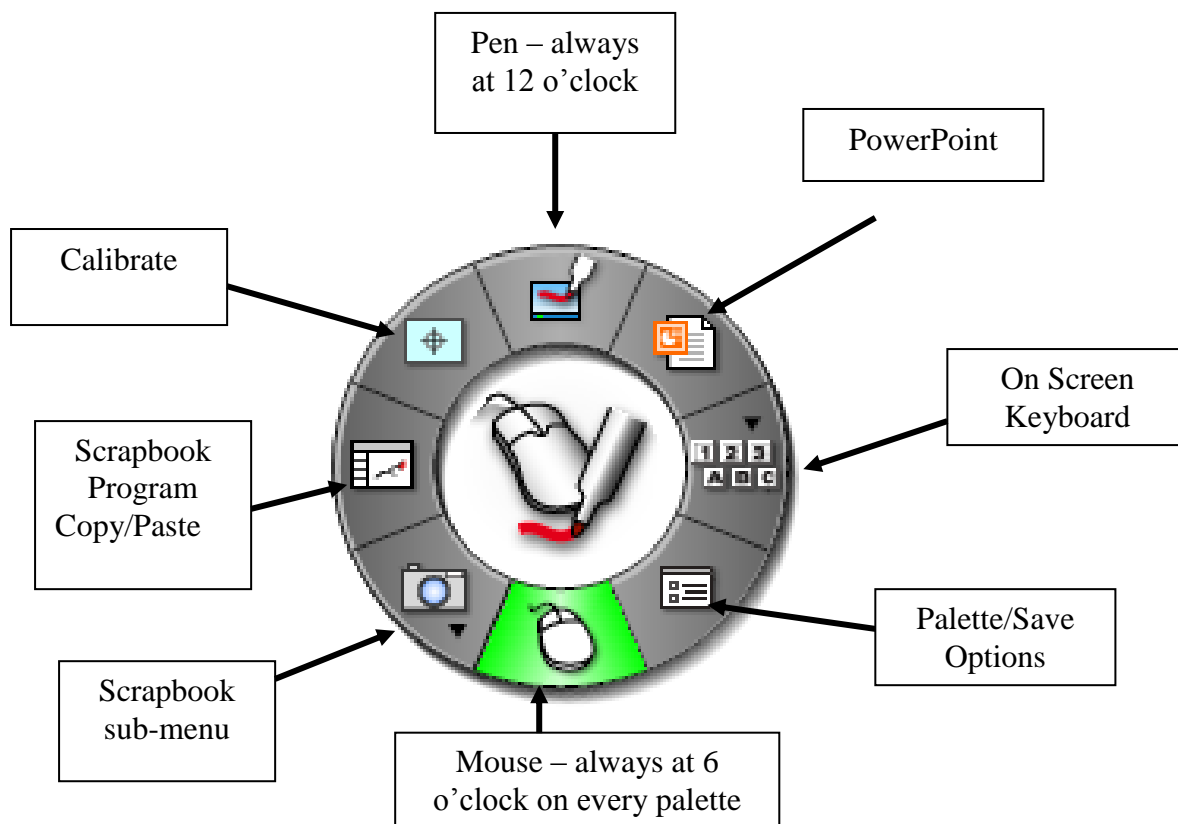
5. Start software, eBeam Interact by clicking on Start; All Programs; eBeam interact.

The software will open up in the system tray at the bottom right hand corner of the screen. It will automatically detect the system. The tool palette appears when the system has been detected. If the palette does not appear, you can right click on the software icon in the system tray and choose detect system.

- 6.



# Desktop Palette



When you see the Desktop Palette, note the wheel can be dragged to the corner of the screen. You can also make the wheel larger or smaller and more or less transparent. **Come back to here.** You need to calibrate the interactive area. Note that you cannot calibrate using the Palette; you must use the menu option. There is also a Calibration Icon on the Palette that can be used at a later point if you need to recalibrate. This would have to be done, if perhaps, you moved the LitePro.

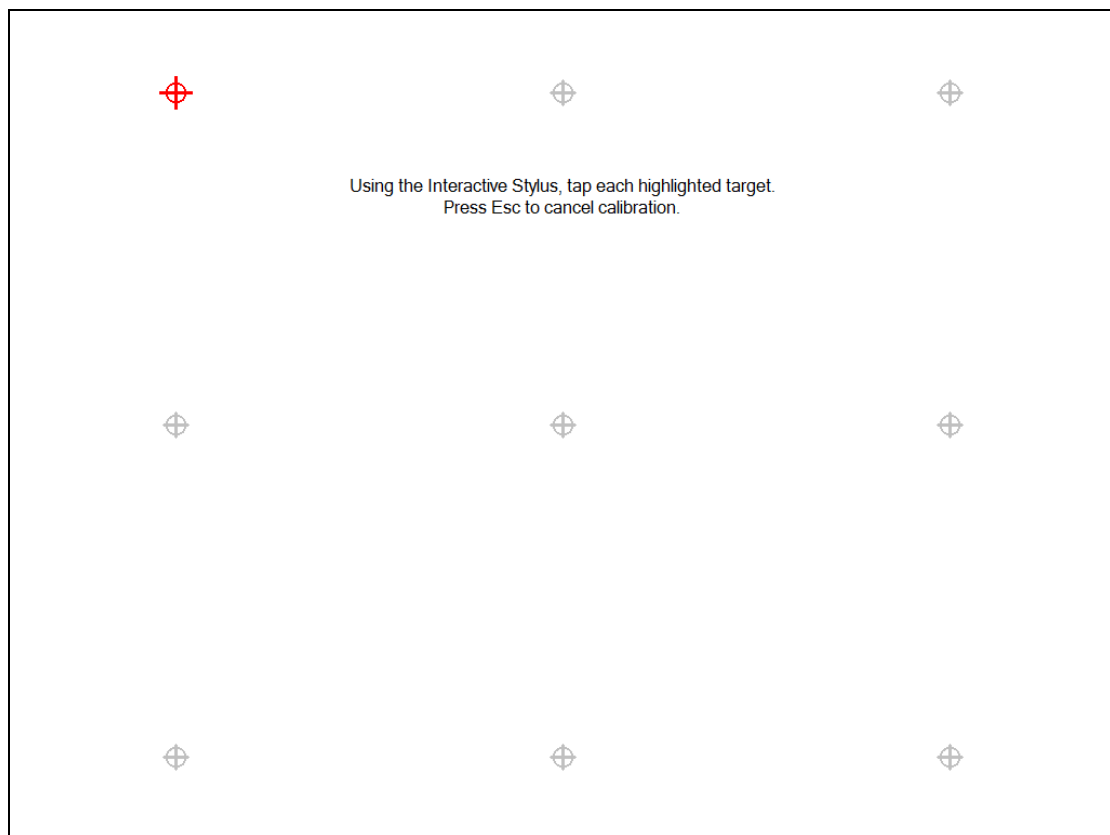
## Calibration

Next step is to calibrate. A 9 point calibration. You need to be at the computer now to calibrate.

**Put steps in here – menu options.**

The toolbox palette identifies which mode you are in and the highlighted portion is what mode you are in.

Click calibrate. This needs to be very accurate. Click in the centre of each red target.



To calibrate, use the Interactive Stylus and click in the centre of each red symbol. You will hear a beep and the next symbol will turn red. When you have finished the eBeam knows where to read the data.

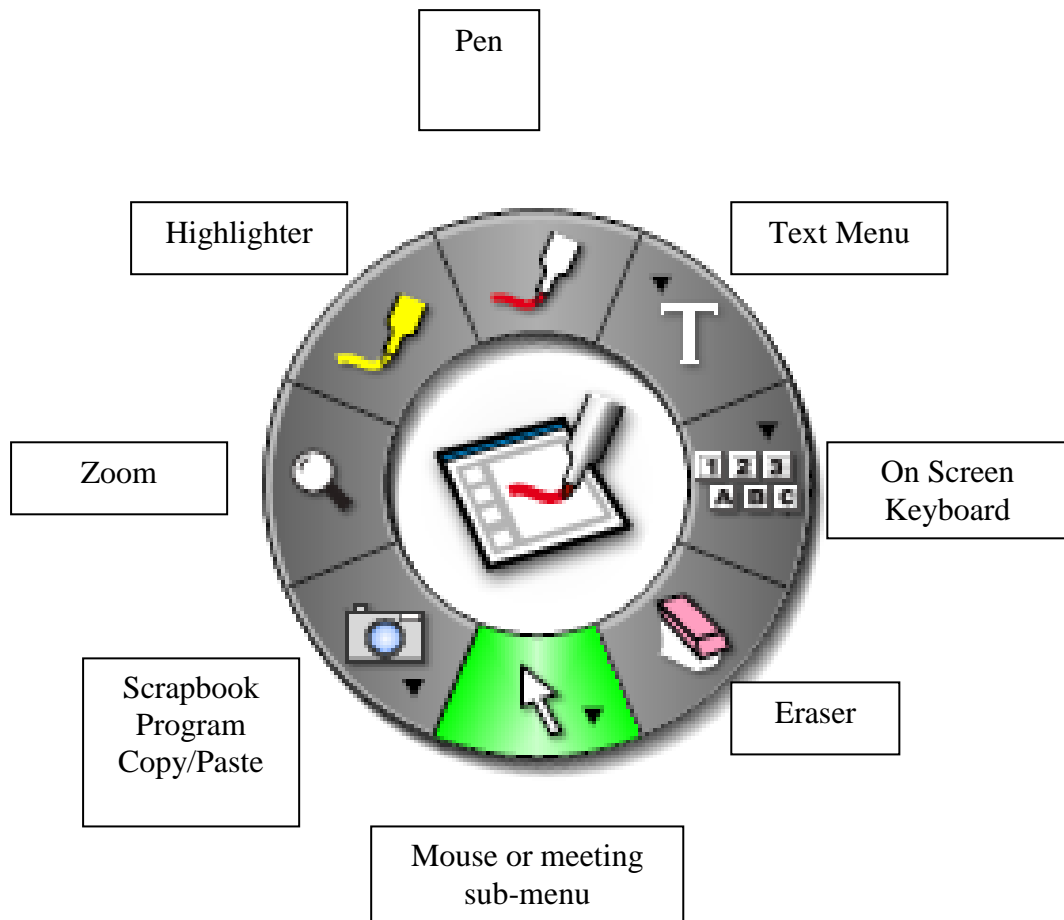
Demonstrate that the stylus is a mouse, open folders etc.

**Show picture here of this feature.**

When using the interactive sleeve you are using capture mode. If you do not have a data projector you can set up eBeam and take notes and it will record and capture those notes into the software. Can be saved as PDF or JPEG.

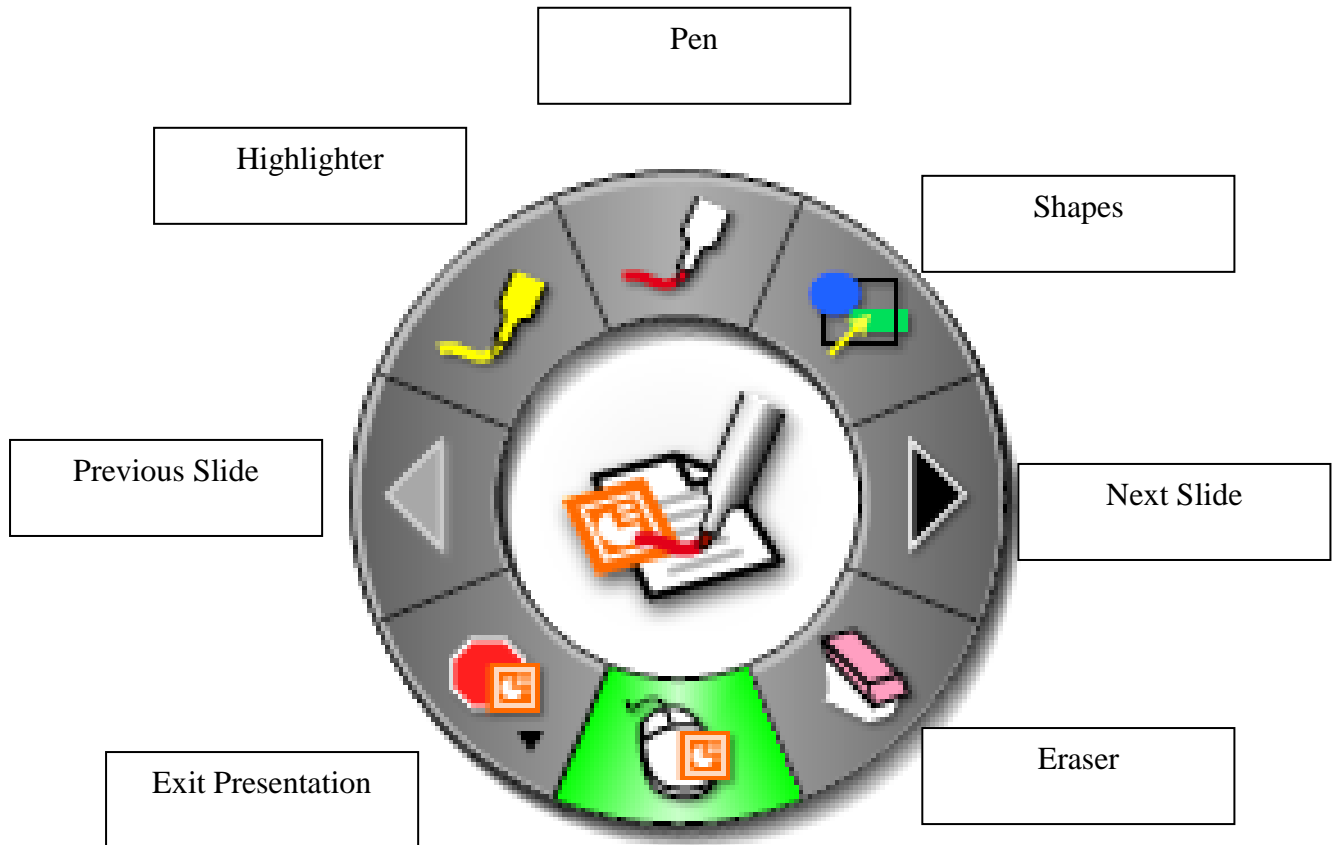


# Scrapbook Palette



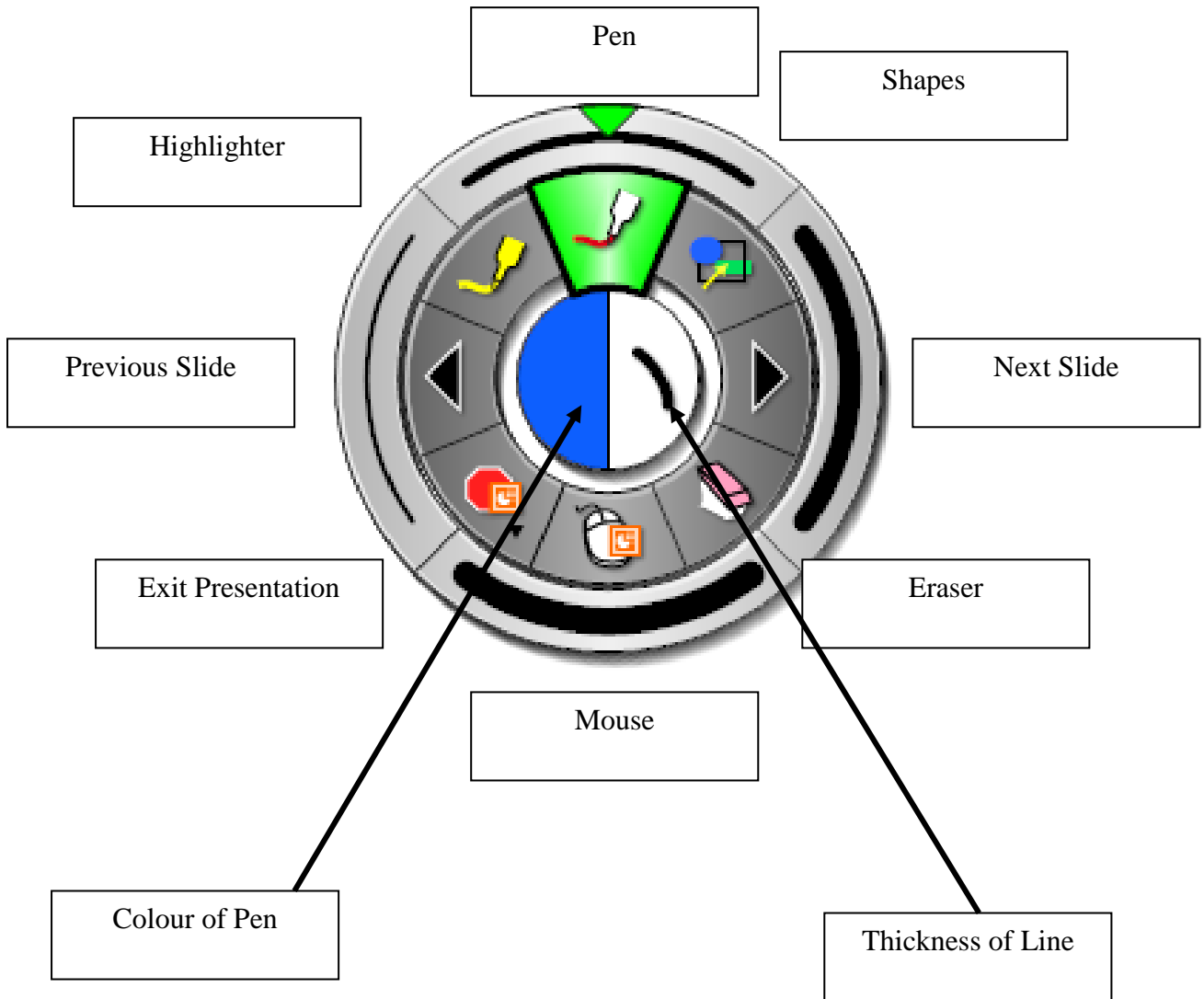
# PowerPoint Palette

To get to the PowerPoint Palette, you click on the PowerPoint Icon and open a presentation. This will change to this Palette.



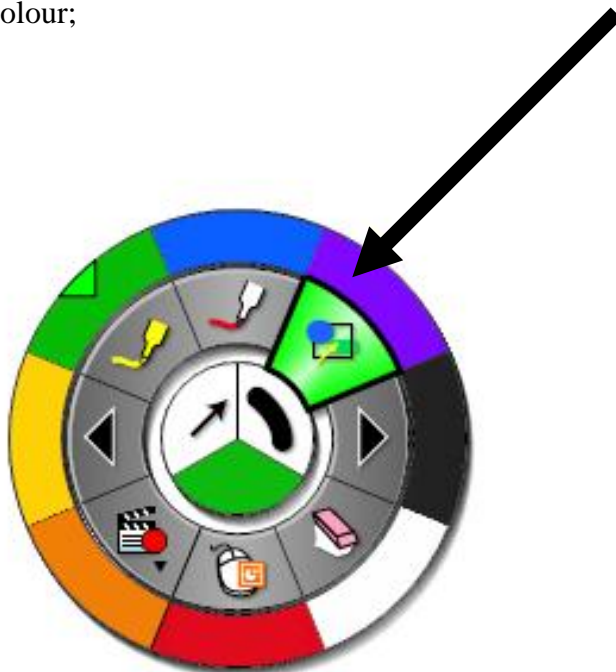
Click on the Pen Icon and choose your colour – see next page.

# Pen Tool

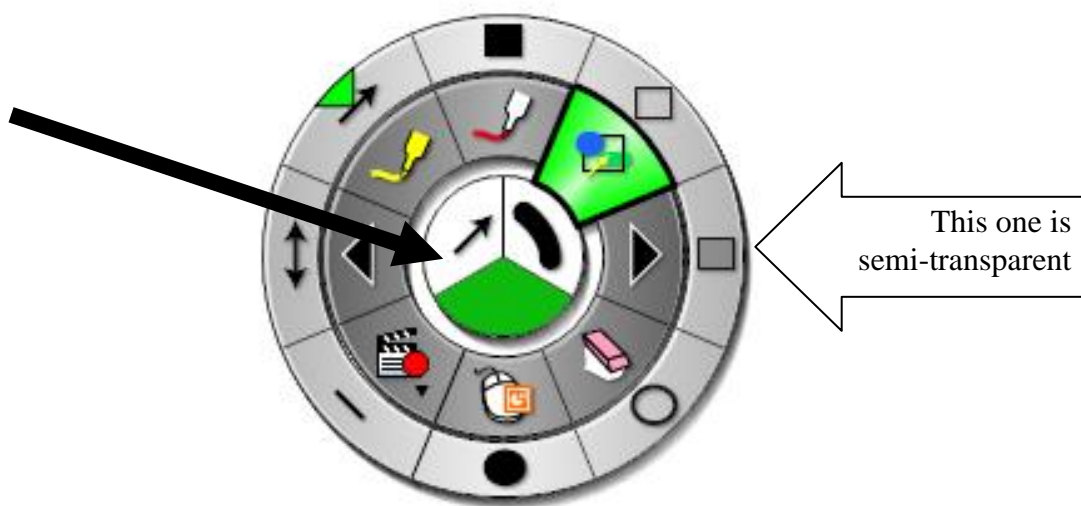


You then need to use the Interactive Stylus Pen – the one that does not have ink in it.

Click on Shape; Shape Colour;



Shape Style – 8 to choose from



Shape Thickness – four to choose from



Now go through the presentation and annotate it by drawing an arrow to each baby.

## Annotate on Presentation called Xmas1 for eBeam

- Ensure the Palette has the Pen Chosen
- Choose purple as the colour; and the circle as the shape.
- Go through each slide and draw a circle around each baby.

## Annotate in Scrapbook

- Open Scrapbook
- Import/Merge
- Ensure File type is selected, ie PowerPoint or all files
- Select your file
- Annotate in the previous manner
- File; Save As PowerPoint; name it and save

## Changing Views in Scrapbook

- See Babies Annotated
- View Master
- Page; Add Image – select a clip art and resize and position it on the page. This will be on every new page.
- Double click on a page and it becomes a full page.
- It is difficult to resize an image with the Interactive Stylus
- Close eBeam Interact

## eBeam Capture

- Open eBeam Capture
- Calibrate from Whiteboard
- Tools; Calibrate Capture Area
- Using the Coloured Sleeves – and ensuring that the beam is not being interfered with by other pens calibrate as guided. See next instruction

## eBeam Capture Calibrate Example

Calibration Points



---

Calibration Points

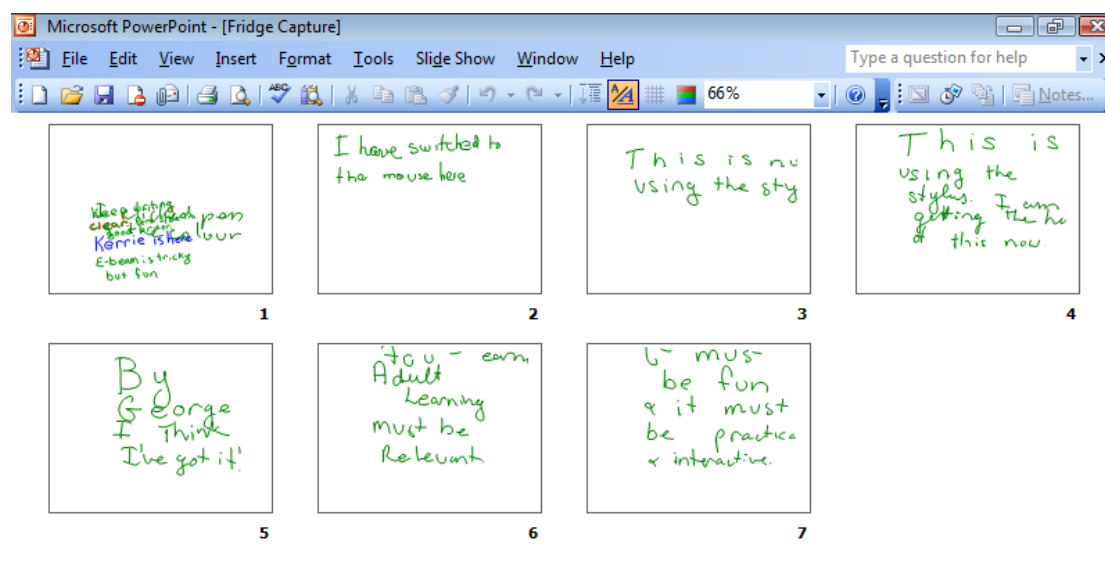
## Capture handwritten Text

- Now you are ready to capture what you write on the flip chart paper. It is a good idea to draw yourself a marker guide as it will help when you are standing in front of the LitePro.
- You can also just follow the paper size.

## See Kerrie's Capture File

- The first few slides were done using the actual coloured pens.
- The final couple of slides were done using the Interactive Stylus.
- I saved it as a PowerPoint file.

This is Kerrie's Capture files in PowerPoint. The writing is scratchy, but you improve as you go. I was only using an A3 sheet of paper, not a flipchart.



The Record Palette is terrific if you want to show a short, sharp video of something technical. My examples are a few simple Excel tips n tricks.

- Click on the Record Palette option
- It will start recording automatically.
- Click the black square to stop the recording
- It will automatically ask you to save it.
- Then you will be given the option to Play.

Note the size of the files is large – 35 MB for a 3 minute recording.

Double click to turn off the Record Palette.

Need to include Handwriting Recognition software

## **E-Beam Capture.**

This is the second function of the eBeam. It does not require a projector. If you are capturing your normal markings on the whiteboard, you can do that.

eBeam interact can be set up on the right hand side and eBeam capture on the left hand side.

You open the software.

You calibrate

It looks like scrapbook. Functionality of icons is similar. We will have eBeam interact and scrapbook happening simultaneously.

If you move the projector, the calibration is lost.

Doesn't assume you have a projector, it will capture the notes.

This is called eBeam complete where you are using interact and capture.

Open eBeam Capture. Start, programs eBeam capture.

Step one, Set up calibration

Tools, calibrate capture area

Two point calibration, it is a wizard

Click next

Tap the marker in the top right hand corner, and then bottom left hand corner and it calculates the surface area. Click finish

Second way to calibrate is to use the short cut strip. You tap in the upper left hand corner of the shortcut strip and then tap on lower right.

Note the shortcut strip has two icons, top icon is a new page, bottom icon is print the page.



Choose the pod and click the interactive sleeve in the top rh corner and then bottom lh corner and then finish.

You can take notes on the whiteboard and it will save it as a page. You can put your info on the

Then calibrate interact using system tools. Calibrate the board.

Use the shortcut strip,

Erase the first lot of notes.

Scrapbook does not have to be the active program, you can have word active.

Place shortcut strip on board

Calibrate shortcut strip

Tap top left-hand corner and bottom right-hand corner, which then creates the new page.

Erasing content, either use normal eraser to reuse the whiteboard.

Using the eraser on the kit, it erases from the whiteboard and the computer screen.

To keep info on computer use normal eraser. To change info on computer, use the eBeam eraser.

Record an equation

$$E=mc^2$$

This records the strokes of the pen and the narration.

You can draw a diagram; if you don't lift your pen it will show a complete drawing. If you lift your pen you will get stroke by stroke.

It is a whiteboard recording system, will not allow multimedia.

## Troubleshooting

- If annotations are not working and you are in blue tooth mode, you can change to hard wire.
- You can also recalibrate as well.
- It is recommended to replace the batteries after a year. The stylus is powered by a AA battery; The interactive pens have 2 lithium batteries.
- Using eBeam complete ensure the capture area is the closest one to the pod.
- You cannot lock an object in Capture, Only for text, no images or video input
- You can buy a refresh pack from Keepad

### Recording using eBeam

Click on the Record Icon from the Desktop Palette hold down the button and you will get the record option

